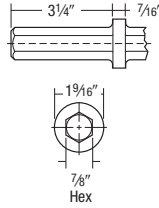
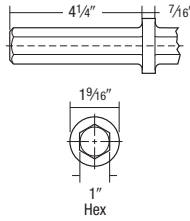


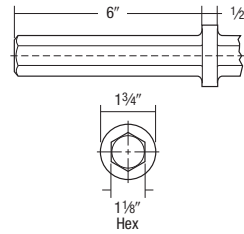
# Paving Breaker Tools



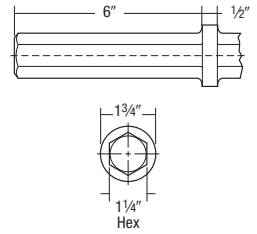
**7/8" X 3 1/4"**



**1" X 4 1/4"**



**1 1/8" X 6"**



**1 1/4" X 6"**

## POINT STYLE

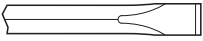
### Standard Moil Point

General concrete demolition



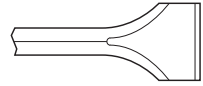
### Standard Narrow Chisel

General concrete demolition



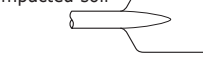
### Standard 3" Wide Chisel

Cutting pavement overlay, general concrete demolition



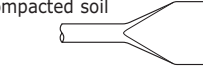
### Asphalt Cutter

5" x 6" Cutting asphalt, hardpan and compacted soil



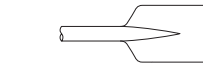
### Small Asphalt Cutter

4 1/2" x 3" Cutting asphalt, hardpan and compacted soil



### Clay Spade

Clay and other rock-free soil  
5 1/2" x 6 1/2"  
• 4 1/2" x 8 1/2"



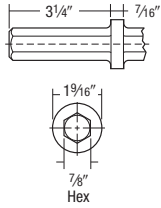
7/8" X 3 1/4"			1" X 4 1/4"			1 1/8" X 6"			1 1/4" X 6"		
CAT.NO.	LGTH. U.C.	WT.	CAT.NO.	LGTH. U.C.	WT.	CAT.NO.	LGTH. U.C.	WT.	CAT.NO.	LGTH. U.C.	WT.
11200	14"	3 1/4 lbs	21200	14"	4 3/4 lbs	31200	14"	6 lbs	41200	14"	7 1/4 lbs
12200	18"	4 lbs	22200	18"	5 1/4 lbs	32200	18"	7 1/4 lbs	42200	18"	9 lbs
13200	24"	4 3/4 lbs	23200	24"	6 3/4 lbs	33200	24"	9 lbs	43200	24"	11 lbs
14200	36"	6 1/4 lbs	24200	36"	8 3/4 lbs	34200	36"	12 1/2 lbs	44200	36"	15 3/4 lbs
			25200	48"	13 lbs	35200	48"	16 lbs	45200	48"	20 1/4 lbs
			26200	60"	15 1/2 lbs	36200	60"	20 lbs	46200	60"	24 3/4 lbs
			27200	72"	19 lbs	37200	72"	24 lbs	47200	72"	30 lbs
11100	14"	3 1/4 lbs	21100	14"	4 3/4 lbs	31100	14"	6 lbs	41100	14"	7 1/4 lbs
12100	18"	4 lbs	22100	18"	5 1/4 lbs	32100	18"	7 1/4 lbs	42100	18"	9 lbs
13100	24"	4 3/4 lbs	23100	24"	6 3/4 lbs	33100	24"	9 lbs	43100	24"	11 lbs
14100	36"	6 1/4 lbs	24100	36"	8 3/4 lbs	34100	36"	12 1/2 lbs	44100	36"	15 3/4 lbs
			25100	48"	13 lbs	35100	48"	16 lbs	45100	48"	20 1/4 lbs
			26100	60"	15 1/2 lbs	36100	60"	20 lbs	46100	60"	24 3/4 lbs
			27100	72"	19 lbs	37100	72"	24 lbs	47100	72"	30 lbs
11300	14"	3 1/2 lbs	21300	14"	5 lbs	31300	14"	6 3/4 lbs	41300	14"	8 lbs
12300	18"	4 1/4 lbs	22300	18"	6 lbs	32300	18"	8 lbs	42300	18"	9 1/2 lbs
13300	24"	5 1/2 lbs	23300	24"	7 1/2 lbs	33300	24"	9 1/2 lbs	43300	24"	11 1/2 lbs
14300	36"	8 lbs	24300	36"	10 1/2 lbs	34300	36"	12 3/4 lbs	44300	36"	16 1/4 lbs
			25300	48"	13 1/2 lbs	35300	48"	17 lbs	45300	48"	20 3/4 lbs
			26300	60"	17 lbs	36300	60"	20 3/4 lbs	46300	60"	25 1/4 lbs
			27300	72"	19 1/4 lbs	37300	72"	24 1/2 lbs	47300	72"	30 lbs
18400		6 1/2 lbs	28400		6 1/2 lbs	38400		6 1/2 lbs	48400		8 1/4 lbs
10011		6 1/2 lbs	20011		7 3/4 lbs	30011		7 3/4 lbs	40011		7 3/4 lbs
19500		7 1/4 lbs	29500		8 1/4 lbs	39500		7 3/4 lbs	49500		10 lbs
			29501		7 1/2 lbs	39501		9 lbs	49501		9 3/4 lbs

Used for demolition of concrete in buildings, dams, roadwork. Industrial applications include breaking refractory liners from furnaces and chipping away slag and molten steel from ladles.

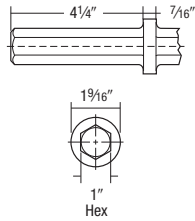
**NOTE:** LGTH. U.C. = Length Under Collar



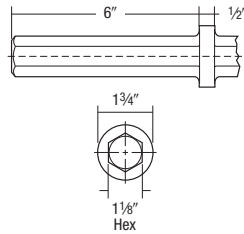
# Paving Breaker Tools



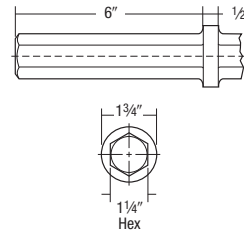
**7/8" X 3-1/4"**



**1" X 4-1/4"**



**1-1/8" X 6"**

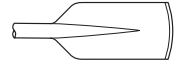


**1-1/4" X 6"**



## POINT STYLE

**Long Spade 3 Edged**  
5" x 9" Clay and other rock-free soil



**Digging Chisel**  
3" x 10" Deeper penetration in hardpan, gravel and similar materials



**Frost Wedge**  
1 7/8" x 12" Breaking up frozen ground



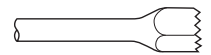
**Asphalt Wedge**  
3" x 7" Spitting apart asphalt



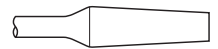
**Concrete Wedge**  
1" x 3" Splitting apart concrete



**Bushing Tool**  
2" x 2" Roughing up or surface removal of concrete



**Concrete Breaker**  
Breaking up concrete after first drilling a hole



CAT.NO.	WT.	CAT.NO.	WT.	CAT.NO.	WT.	CAT.NO.	WT.
18401	9 1/4 lbs	28401	10 lbs	38401	10 1/2 lbs	48401	10 1/2 lbs
11080	6 1/2 lbs	21080	7 lbs	31080	8 1/2 lbs	41080	10 1/4 lbs
11060	8 1/2 lbs	21060	9 lbs	31060	13 lbs	41060	13 lbs
N/A		21140	6 1/2 lbs	31140	8 lbs	41140	8 3/4 lbs
N/A		21130	6 lbs	31130	7 lbs	41130	8 1/4 lbs
10010	6 1/4 lbs	20010	6 1/4 lbs	30010	8 1/4 lbs	40010	8 1/4 lbs
11700	8 3/4 lbs	21700	9 3/4 lbs	31700	10 3/4 lbs	41700	11 1/4 lbs

CAT.NO.	ROD SIZE	CAT.NO.	HOLE SIZE	ROD SIZE	CAT.NO.	HOLE SIZE	ROD SIZE	CAT.NO.	HOLE SIZE	ROD SIZE
N/A		21758	3/4"	5/8"	31758	3/4"	5/8"	41758	3/4"	5/8"
N/A		21734	7/8"	3/4"	31734	7/8"	3/4"	41734	7/8"	3/4"
N/A		21778	1"	7/8"	31778	1"	7/8"	41778	1"	7/8"
N/A		21701	1 1/8"	1"	31701	1 1/8"	1"	41701	1 1/8"	1"

## POINT STYLE

**Ground Rod Driver**  
Driving electrical grounding rods into the soil



Used for demolition of concrete in buildings, dams, roadwork. Industrial applications include breaking refractory liners from furnaces and chipping away slag and molten steel from ladles.

**WARNING:**  
Wear Safety Goggles

